

~ The Four Corners ~



Docent Toby Case

Northeast Corner

The first subdivision was laid out in 1889. W. G. DeGroff was the first to purchase a lot. He was a carpenter and built a home on the Northeast corner of Walworth Ave and Geneva Street. It had a porch on three sides and he soon modeled it to serve High Tea. Mr. Mel Spence later began a full service restaurant and it continues to be a restaurant today.

This side of the street is also where the first commercial buildings began. There was a general merchandise store and a meat market. At one time it employed four butchers. Next door was Hermanson's bakery. Further north was Roeker's blacksmith shop and later the blacksmith shop was owned by Louis Rasmussen.



Northeast Corner



Northwest Corner

Northwest Corner

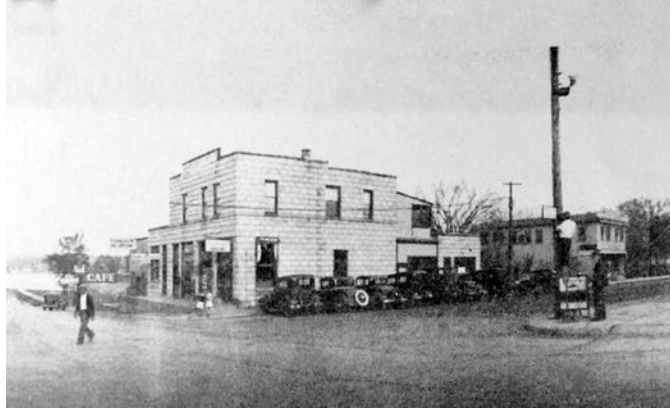
C.M. Williams built a general merchandise store and in 1895 Joe Keat bought one half to house the Lake Vista House Hotel. The hotel burned in 1903 and William Lackey began his three level pressed brick building. The lower level housed a pool hall, Granzow and Peterson Grocery Store, and a tea room. Later the tea room gave way to a drug store with Arthur Ohl, proprietor. A second drug store was across the alley. It had originally been a harness shop and then a hand laundry. On the second floor of the Lackey building, Mr. Lackey opened a hardware and dry goods store. The third space, on the front corner of the building, housed the U.S. Post Office. The third floor was and still is apartments.



Southwest Corner

Southwest Corner

Williams Bay folklore says this corner was the location of the first livery. It was said to have been dismantled and the lumber used to build the two houses to the south of the corner. In 1917 Mr. Van Belzer built the Star Garage. In 1923 Elmer "Hoppi" Hopkins and his partner Frank Walker purchased the business and built a brick building to service automobiles. Later they increased the size of the building and added an area for boat storage and service. They held the Chris Craft service contract as well as one for Johnson motors. The depression forced the partnership to dissolve and Mr. Hopkins moved to the building next to the Lackey building and continued his business.



Southeast Corner

Southeast Corner

Leslie Sawyer built the cement block building that initially housed a grocery store and two restaurants. In the ensuing years this building would house a pool hall, beauty shop, and two restaurants, including the Keg Room. Down the block is a building built by Henry Bjorge. He was a painter. Shortly after, Mr. Bjorge's nephew Carl came to join him in his painting business. -- *By docent Toby Case.*